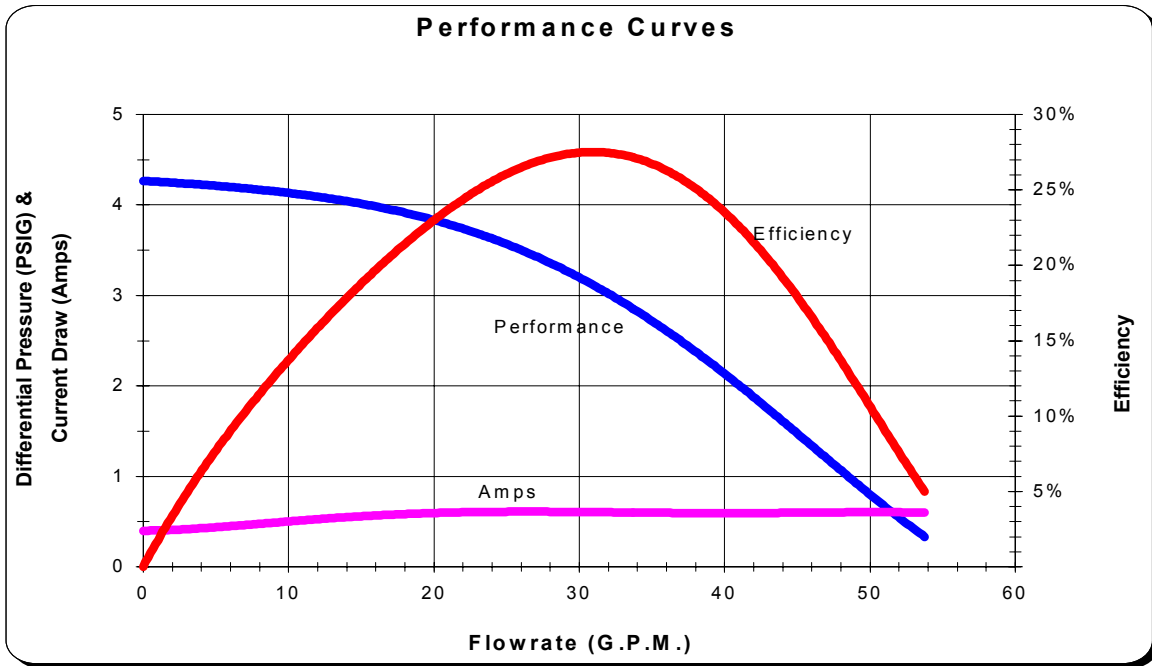




## Product Specification Sheet

### Model CMHP550112

The Circ-Master provides 24 hour recirculation with a higher GPM for increased heat efficiency and up to four times the filtration. Permanently lubricated ball bearings extend the motor life for the continuous-duty operation, along with the carbon-graphite, self-lubricating seal.

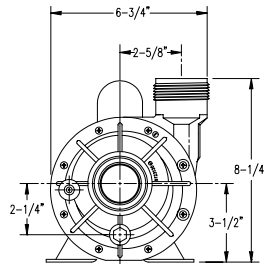
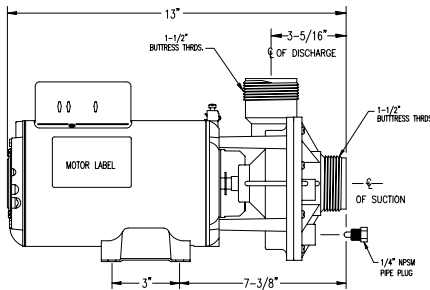


These performance curves are a result of in-lab testing using 2" suction line, actual performance may vary based on manufacturing tolerances and application.

Performance Table						
PSI	0.8	2.1	3.2	3.8	4.1	4.3
GPM	50	40	30	20	10	0
<b>BEP</b>	<b>30 GPM</b>					

Motor Data							
<b>Manufacturer:</b>	Emerson	<b>AF Part Number:</b>	93529303	<b>Model:</b>	K55MYGRD-8367		
<b>HP:</b>	1/15	<b>FLA:</b>	0.63	<b>Volts:</b>	230	<b>RPM:</b>	1725
<b>Freq:</b>	60	<b>Phase:</b>	1	<b>Frame:</b>	48	<b>Speed:</b>	1

Shipping Weight: 15.18 lbs    Pumps per pallet layer: 15



**AQUA-FLO, LLC**  
 PUMPS FOR THE LEISURE WATER INDUSTRY™  
 5651 Schaefer Ave., Chino, CA USA 91710 TEL: (909) 591-7453 FAX: (909) 627-5660 [www.aqua-flo.com](http://www.aqua-flo.com)  
 Shipping Address: 5002 Lindsay Court, Chino, CA USA 91710 TEL: (909) 993-5340